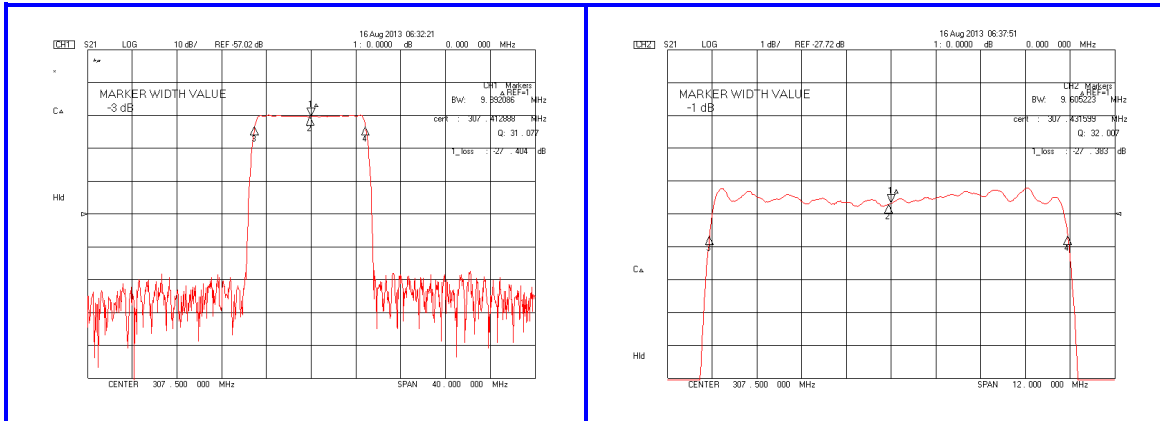


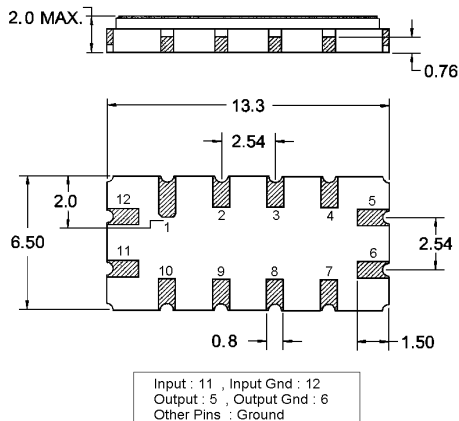
## Typical Performance



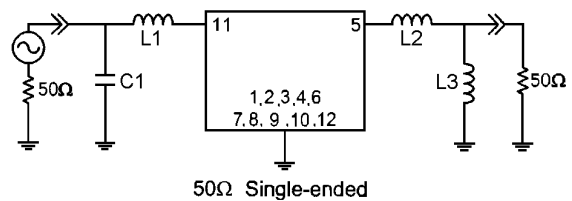
## Specification

| Parameter  | Unit   | Min.            | Typ.   | Max.  |
|--|--------|-----------------|--------|-------|
| Center Frequency                                   | MHz    | -               | 307.50 | -     |
| Insertion Loss                                     | dB     | -               | 27.50  | 29.50 |
| 1dB Bandwidth                                      | MHz    | 9.30            | 9.60   | -     |
| 3dB Bandwidth                                      | MHz    | -               | 9.89   | -     |
| 40dB Bandwidth                                     | MHz    | -               | 11.25  | 11.50 |
| Ultimate Attenuation                               | dB     | 40              | 45     | -     |
| Amplitude Ripple(Fc ± 4.5MHz)                      | dB     | -               | 0.60   | 1.50  |
| Relative Attenuation<br>Passband Edge+1MHz(313MHz) | dB     | 15              | 25     | -     |
| Absolute Delay                                     | μsec   | -               | 1.47   | -     |
| Substrate Material & T.C.F                         | ppm/°C | Quartz & -0.032 |        |       |
| Package  | mm     | 13 X 6.5        |        |       |

## Package Dimension

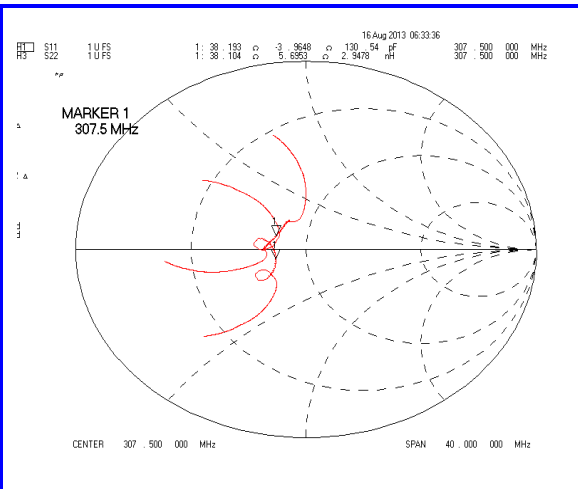
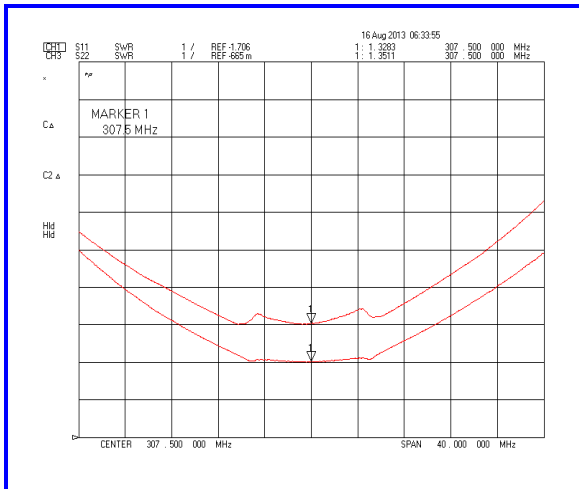
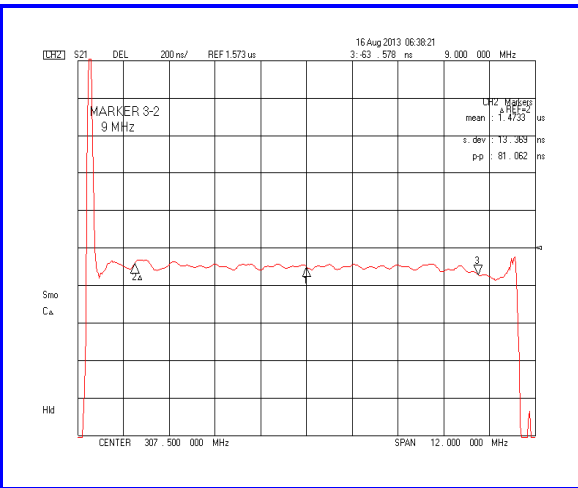
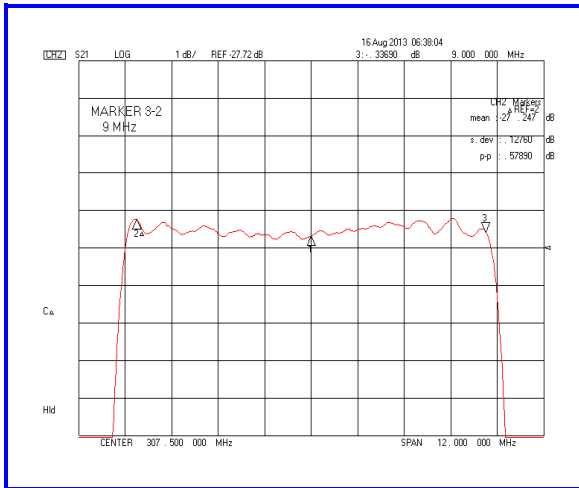
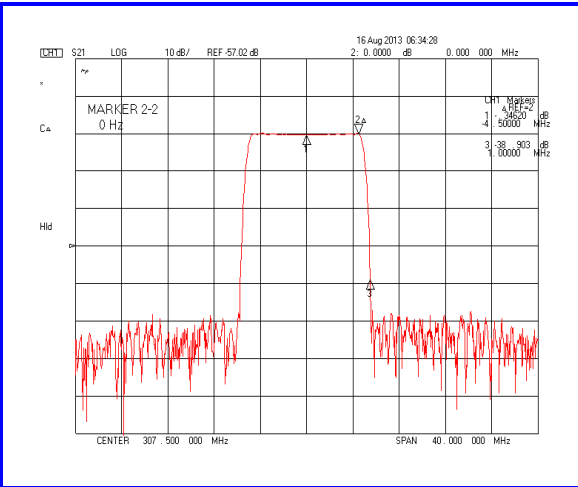
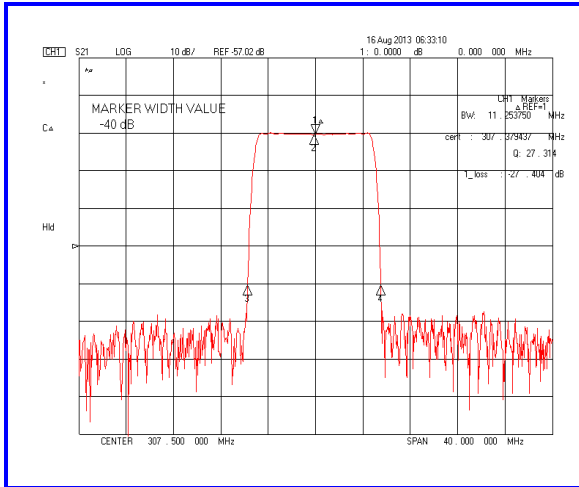


## Matching Configuration



L1=18nH, L2=3.3nH, L3=4.7nH, C1=33pF  
Source / Load Impedance = 50Ω  
Ambient Temperature = 25°C

Rev0.130820



[www.ctech.co.kr](http://www.ctech.co.kr)