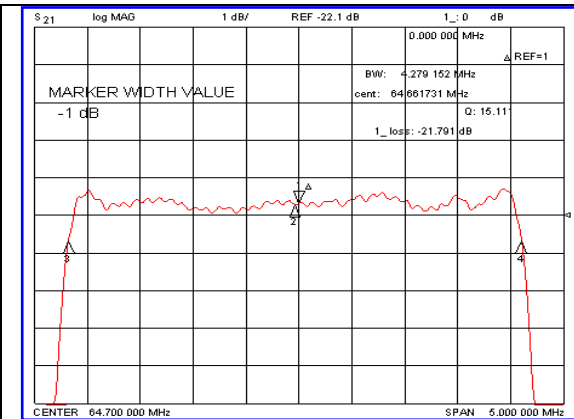
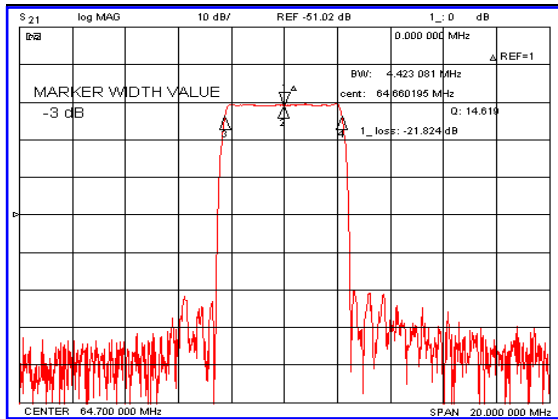


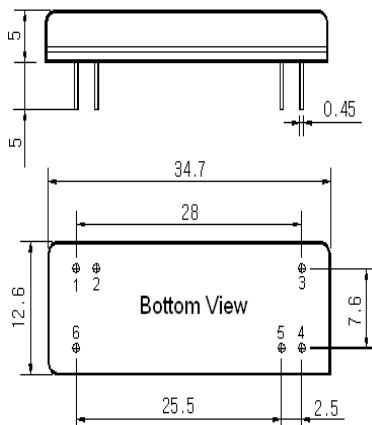
Typical Performance



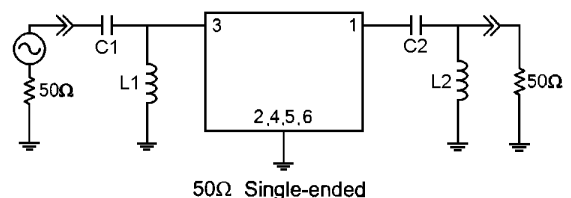
Specification

| Parameter | Unit | Min. | Typ. | Max. |
|-------------------------|---------------------|-----------------------|-------|-------|
| Center Frequency | MHz | 64.62 | 64.70 | 64.78 |
| Insertion Loss | dB | - | 21.82 | 24.00 |
| 1dB Bandwidth | MHz | 4.10 | 4.27 | - |
| 3dB Bandwidth | MHz | - | 4.42 | - |
| 20dB Bandwidth | MHz | - | 4.84 | 4.95 |
| 40dB Bandwidth | MHz | - | 5.02 | - |
| Passband Ripple | dB | - | 0.65 | 1.00 |
| Group Delay Variation | nsec | - | 200 | 300 |
| Absolute Delay | μsec | - | 4.48 | - |
| Ultimate Attenuation | dB | - | 47 | - |
| Substrate Material | - | YZ-LiNbO ₃ | | |
| Temperature Coefficient | ppm/°C ² | -94 | | |

Package Dimension



Matching Configuration



L1=L2=390nH, C1=C2=110pF
 Source / Load Impedance = 50Ω
 Ambient Temperature = 25°C

Rev0. 070730

