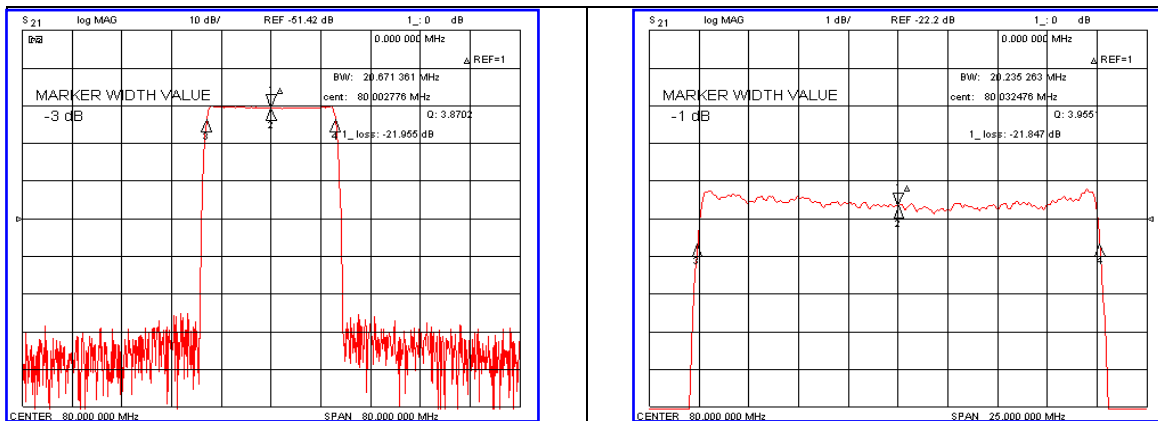


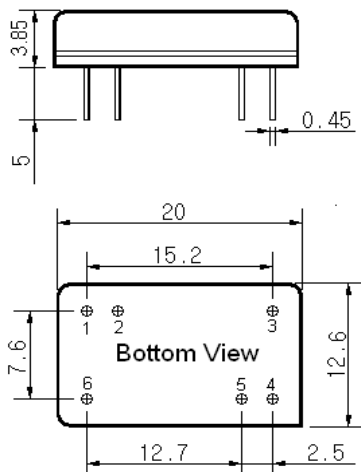
Typical Performance



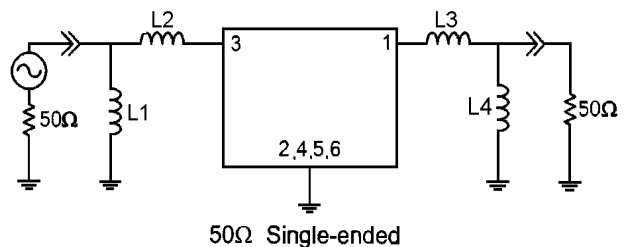
Specification

| Parameter | Unit | Min. | Typ. | Max. |
|-----------------------------------|--------|-------------------------|-------|-------|
| Center Frequency | MHz | - | 80.00 | - |
| Insertion Loss | dB | - | 21.95 | 24.00 |
| 1dB Bandwidth | MHz | 20.10 | 20.23 | - |
| 3dB Bandwidth | MHz | - | 20.67 | - |
| 40dB Bandwidth | MHz | - | 22.66 | 22.80 |
| Passband Ripple(Fc±9.42MHz) | dB | - | 0.60 | 1.00 |
| Group Delay Variation(Fc±9.42MHz) | nsec | - | 40 | 80 |
| Absolute Delay | µsec | - | 1.72 | - |
| Ultimate Attenuation | dB | 50 | 55 | - |
| Substrate Material | - | 128- LiNbO ₃ | | |
| Temperature Coefficient | ppm/°C | -72 | | |

Package Dimension



Matching Configuration



L1=470nH, L2=150nH, L3=100nH, L4=470nH
 Source / Load Impedance = 50Ω
 Ambient Temperature = 25°C

Rev0. 090317

