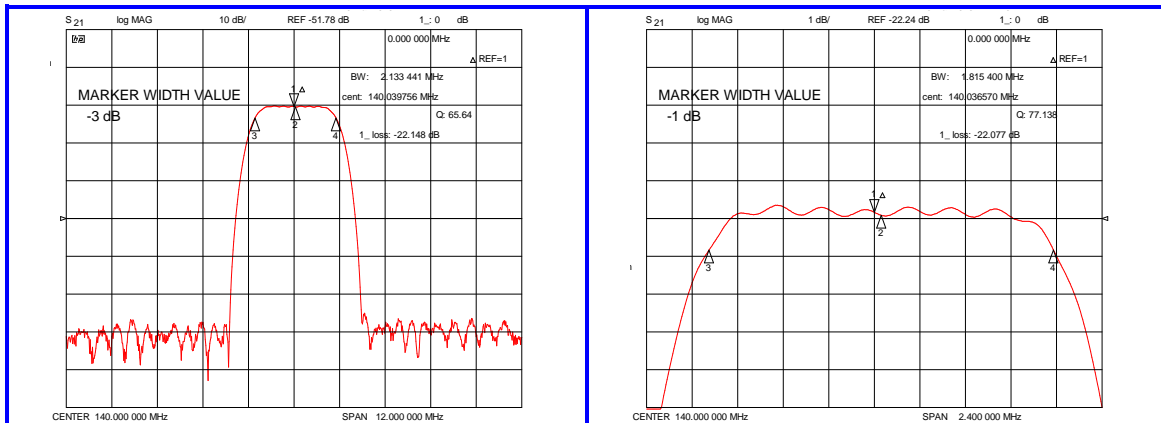


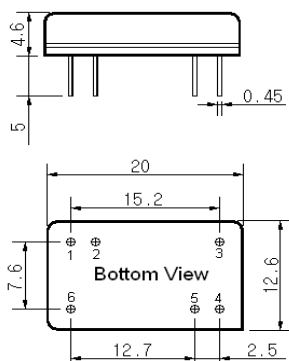
Typical Performance



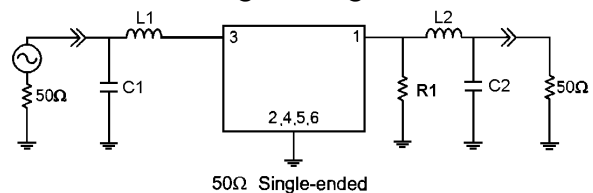
Specification

| Parameter | Unit | Min. | Typ. | Max. |
|---------------------------|--------|---------------|--------|--------|
| Center Frequency | MHz | 139.90 | 140.00 | 140.10 |
| Insertion Loss | dB | - | 22.50 | 25.00 |
| 1dB Bandwidth | MHz | 1.66 | 1.81 | - |
| 3dB Bandwidth | MHz | 1.80 | 2.13 | - |
| 20dB Bandwidth | MHz | - | 2.93 | 3.20 |
| 40dB Bandwidth | MHz | - | 3.32 | 3.55 |
| 50dB Bandwidth | MHz | - | 3.42 | 3.65 |
| Ultimate Attenuation | dB | 50 | 55 | - |
| Amplitude Ripple | dB | - | 0.65 | 1.20 |
| Return Loss 1dB Bandwidth | nsec | 5 | 7 | - |
| Absolute Delay | µsec | - | 2.19 | - |
| Power Handling | dBm | - | - | 10 |
| Temperature Coefficient | ppm/°C | -0.032 | | |
| Package | mm | 20 X 12 (DIP) | | |

Package Dimension



Matching Configuration



L1=56nH, L2=82nH, C1=75pF, C2=43pF, R1=300 Ω
 Source / Load Impedance = 50Ω
 Ambient Temperature = 25°C

Rev.0 130307

