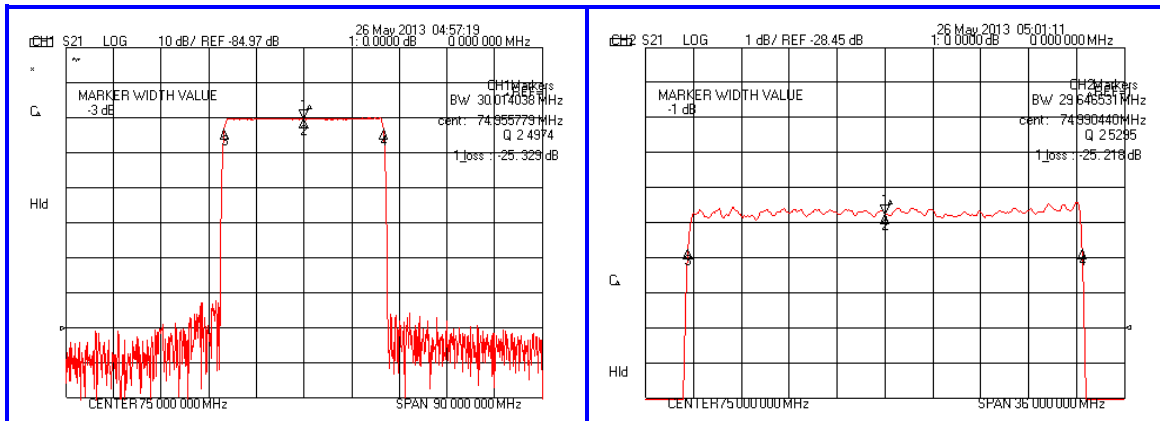


#### Typical Performance

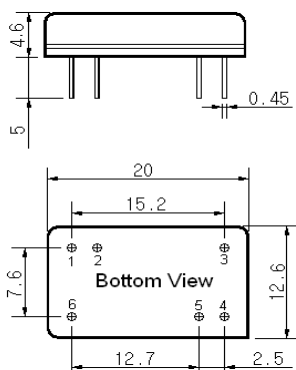


#### Specification

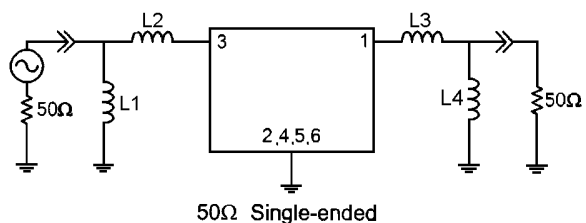
Parameter	Unit	Min.	Typ.	Max.
Center Frequency	MHz	-	75.0	-
Insertion Loss	dB	-	25.3	27.5
1dB Bandwidth	MHz	29.4	29.64	-
3dB Bandwidth	MHz	-	30.01	-
40dB Bandwidth	MHz	-	31.48	31.7
Amplitude Ripple #1 (Fc ± 14.5MHz)	dB	-	0.50	1.0
Amplitude Ripple #2 (60.5~66.5MHz)	dB	-	0.40	0.7
Group Delay Variation(Fc ± 14.5MHz)	nsec	-	20	50
Absolute Delay	µsec	-	1.95	-
Ultimate Attenuation	dB	50	55	-
Substrate Material & T.C.F	ppm/°C	128LN & -72		
Temperature Coefficient	mm	20 X 12 (DIP)		

Input power : +10dBm

#### Package Dimension



#### Matching Configuration



L1=180nH, L2=82nH, L3=120nH, L4=180nH  
 Source / Load Impedance = 50Ω  
 Ambient Temperature = 25°C

Rev0. 130529

