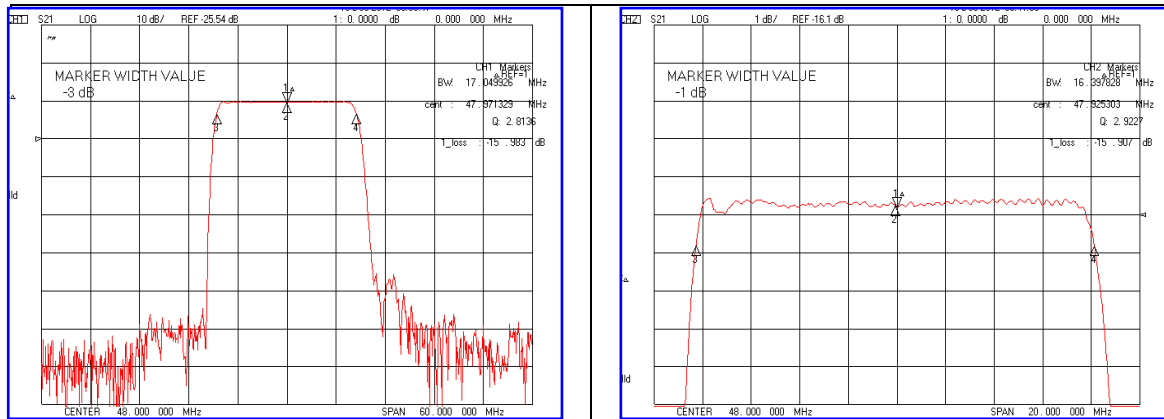


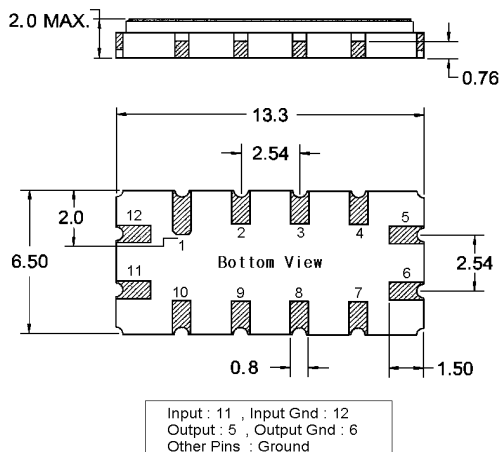
Typical Performance



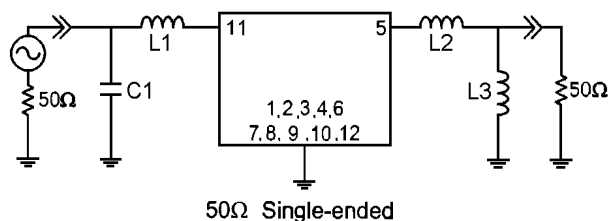
Specification

| Parameter | Unit | Min. | Typ. | Max. |
|-------------------------|--------|-----------------------|-------|-------|
| Center Frequency | MHz | 47.92 | 48.00 | 48.08 |
| Insertion Loss | dB | - | 15.90 | 17.50 |
| 1dB Bandwidth | MHz | 15.80 | 16.39 | - |
| 3dB Bandwidth | MHz | - | 17.04 | - |
| 40dB Bandwidth | MHz | - | 20.00 | 20.50 |
| Passband Ripple | dB | - | 0.50 | 1.00 |
| Group Delay Variation | nsec | - | 50 | 100 |
| Absolute Delay | µsec | - | 1.33 | - |
| Ultimate Attenuation | dB | 40 | 45 | - |
| Substrate Material | - | YZ-LiNbO ₃ | | |
| Temperature Coefficient | ppm/°C | -86 | | |

Package Dimension



Matching Configuration



L1=220nH, L2=180nH, L3=180nH, C1=51pF
Source / Load Impedance = 50Ω
Ambient Temperature = 25°C

Rev.0 121219

