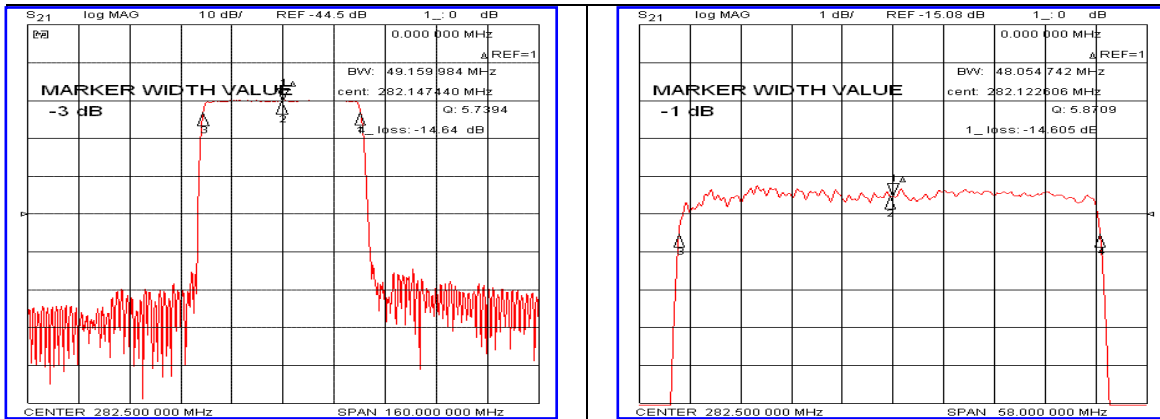


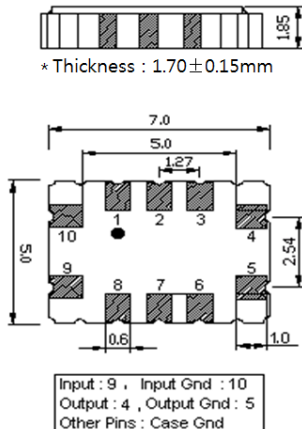
Typical Performance



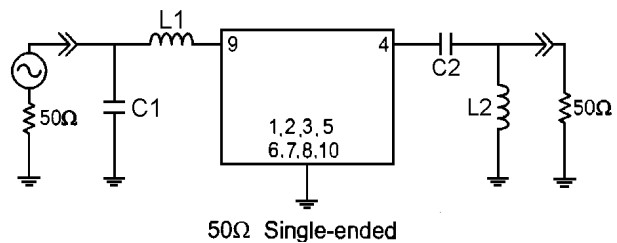
Specification

| Parameter | Unit | Min. | Typ. | Max. |
|--|-------------------|-------|--------|-------|
| Center Frequency | MHz | - | 282.50 | - |
| Insertion Loss | dB | - | 14.60 | 16.50 |
| 1dB Bandwidth | MHz | 47.50 | 48.05 | - |
| 3dB Bandwidth | MHz | - | 49.15 | - |
| 30dB Bandwidth | MHz | - | 53.30 | 54.00 |
| 40dB Bandwidth | MHz | - | 54.10 | 55.00 |
| Passband Ripple($F_c \pm 22.5$ MHz) | dB | - | 0.65 | 1.00 |
| Group Delay Variation($F_c \pm 22.5$ MHz) | nsec | - | 35 | 70 |
| IN_OUT Return Loss($F_c \pm 22.5$ MHz) | dB | 7 | 13 | - |
| Ultimate Attenuation | dB | 40 | 45 | - |
| Absolute Delay | μ sec | - | 0.66 | - |
| Temperature Coefficient | ppm/ $^{\circ}$ C | - | -86 | - |

Package Dimension



Matching Configuration



L1=18nH, L2=12nH, C1=20pF, C2=62pF
Source / Load Impedance = 50Ω
Ambient Temperature = 25°C

Rev1. 110217

