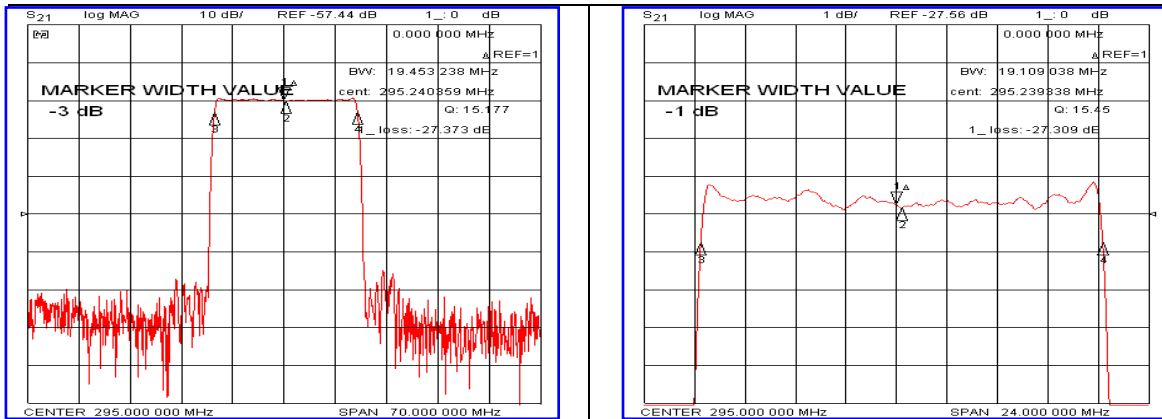


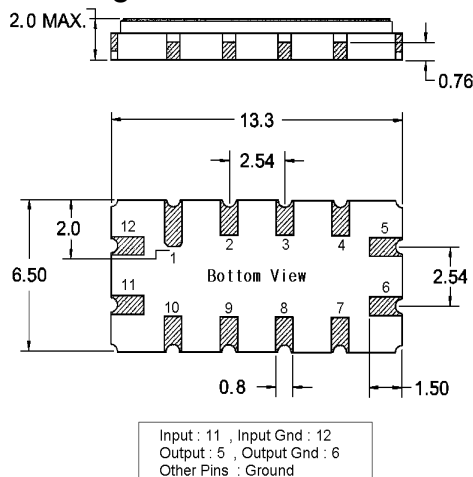
Typical Performance



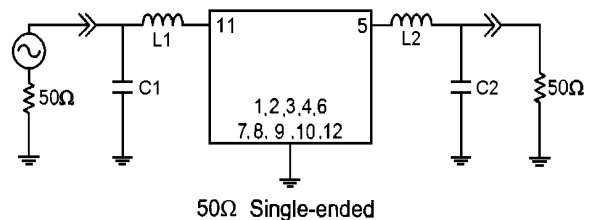
Specification

| Parameter | Unit | Min. | Typ. | Max. |
|--|-------------------------|------------------------|--------|-------|
| Center Frequency | MHz | - | 295.00 | - |
| Insertion Loss | dB | - | 27.50 | 29.50 |
| 1dB Bandwidth | MHz | 18.90 | 19.10 | - |
| 3dB Bandwidth | MHz | - | 19.45 | - |
| 40dB Bandwidth | MHz | - | 21.07 | 21.30 |
| Passband Ripple($F_c \pm 9.0\text{MHz}$) | dB | - | 0.66 | 1.20 |
| Group Delay Variation($F_c \pm 9.0\text{MHz}$) | nsec | - | 50 | 100 |
| Absolute Delay | μsec | - | 1.88 | - |
| Ultimate Attenuation | dB | 40 | 45 | - |
| Substrate Material | - | 112-LiTaO ₃ | | |
| Temperature Coefficient | ppm/ $^{\circ}\text{C}$ | -20 | | |

Package Dimension



Matching Configuration



$L1=15\text{nH}$, $L2=12\text{nH}$, $C1=22\text{pF}$, $C2=22\text{pF}$
Source / Load Impedance = 50 Ω
Ambient Temperature = 25 $^{\circ}\text{C}$

Rev.0 120322

