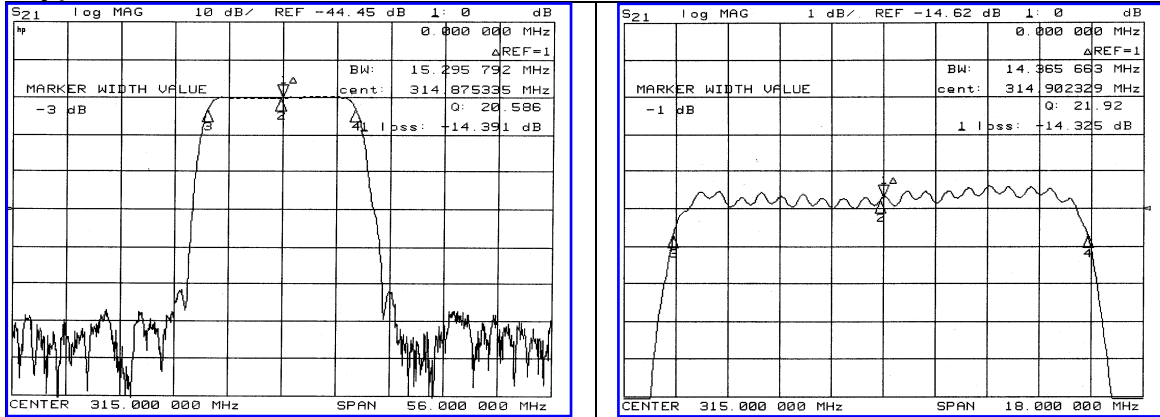


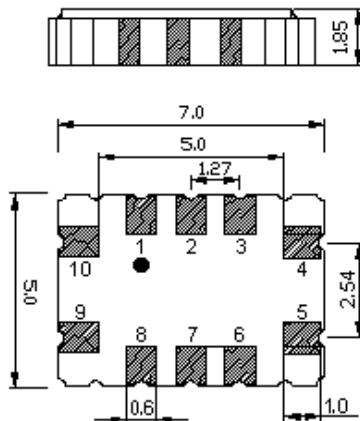
Typical Performance



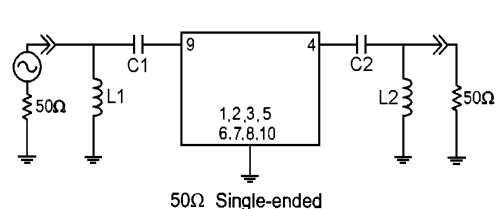
Specification

| Parameter | Unit | Min. | Typ. | Max. |
|------------------------------------|------|--------------------|--------|-------|
| Center Frequency (Fc) | MHz | - | 315.00 | - |
| Insertion Loss | dB | - | 14.50 | 17.00 |
| 1dB Bandwidth | MHz | 13.00 | 14.36 | - |
| 40dB Bandwidth | MHz | - | 19.70 | 20.00 |
| Passband Ripple (Fc±6.35Mhz) | dB | - | 0.60 | 1.00 |
| Group Delay Variation (Fc±6.35Mhz) | nsec | - | 60 | 150 |
| Attenuation (Fc-100.0 ~ -10.3Mhz) | dB | 40.0 | 45.0 | - |
| Attenuation (Fc+10.3 ~ +100.0Mhz) | dB | 40.0 | 45.0 | - |
| Input & Output Impedance | ohms | - | 50 | - |
| Substrate Material | - | LiTaO ₃ | | |
| Operating Temperature Range | °C | -40 | +25 | +85 |

Package Dimension



Matching Configuration



L1=L2=8.2nH, C1=36pF, C2=27pF
 Source / Load Impedance = 50Ω
 Ambient Temperature = 25°C

02/06/2006

Typical Performance

