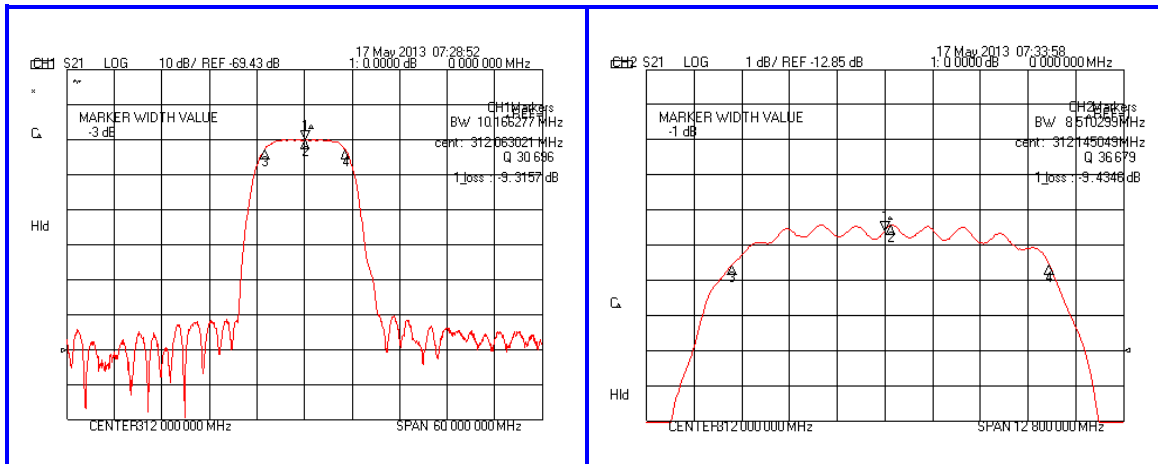


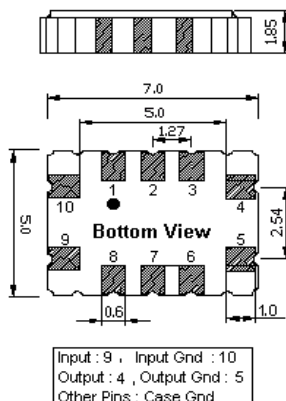
### Typical Performance



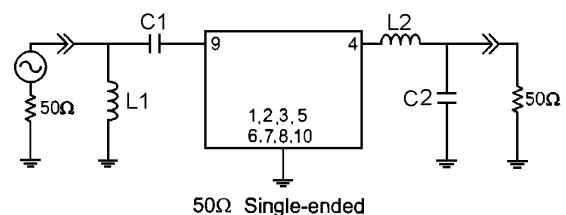
### Specification

| Parameter                                 | Unit              | Min.                         | Typ.   | Max.  |
|---|-------------------|------------------------------|--------|-------|
| Center Frequency                          | MHz               | -                            | 312.00 | -     |
| Insertion Loss                            | dB                | -                            | 9.31   | 11.50 |
| 1dB Bandwidth                             | MHz               | 7.50                         | 8.51   | -     |
| 40dB Bandwidth                            | MHz               | -                            | 16.65  | 17.50 |
| Attenuation                               |                   |                              |        |       |
| 148MHz~266MHz                             | dB                | 40                           | 45     | -     |
| 354MHz~472MHz                             | dB                | 40                           | 45     | -     |
| Amplitude Ripple( $F_c \pm 2.5$ MHz)      | dB                | -                            | 0.45   | 1.00  |
| IN OUT Return Loss                        | dB                | 5                            | 10     | -     |
| Group Delay Variation( $F_c \pm 2.5$ MHz) | nsec              | -                            | 50     | 150   |
| Absolute Delay                            | $\mu$ sec         | -                            | 0.52   | -     |
| Substrate Material & T. C. F              | ppm/ $^{\circ}$ C | 112 LiTaO <sub>3</sub> & -20 |        |       |
| Package                                   | mm                | 7 X 5 (SMD)                  |        |       |

### Package Dimension



### Matching Configuration



L1=8.2nH, L2=12nH, C1=68pF, C2=27pF  
Source / Load Impedance = 50 $\Omega$   
Ambient Temperature = 25 $^{\circ}$ C

Rev.0 130520

