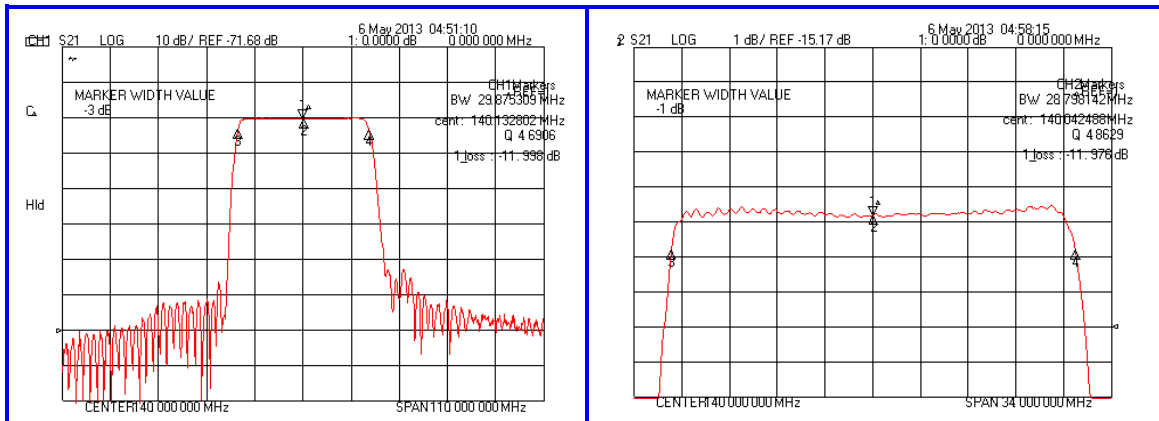


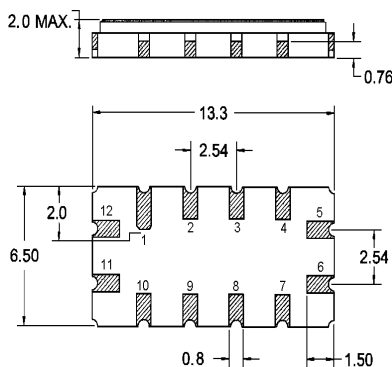
Typical Performance



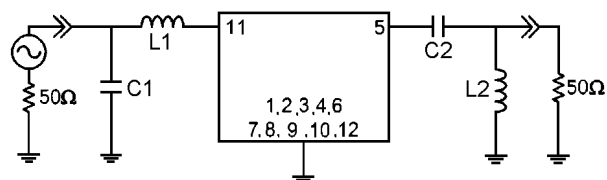
Specification

| Parameter | Unit | Min. | Typ. | Max. |
|-------------------------------------|--------|-----------------------------|-------|-------|
| Center Frequency | MHz | - | 140.0 | - |
| Insertion Loss | dB | - | 12.00 | 14.00 |
| 1dB Bandwidth | MHz | 28.30 | 28.79 | - |
| 3dB Bandwidth | MHz | - | 29.87 | - |
| 40dB Bandwidth | MHz | - | 35.59 | 36.20 |
| Ultimate Attenuation | dB | 40 | 45 | - |
| Amplitude Ripple(Fc ± 12.8MHz) | dB | - | 0.35 | 1.00 |
| Group Delay Variation(Fc ± 12.8MHz) | nsec | - | 30 | 80 |
| Absolute Delay | µsec | - | 0.62 | - |
| Substrate Material / T. C. F | ppm/°C | Yz-LiNbO ₃ / -86 | | |
| Package | mm | 13.3 X 6.5 (SMD) | | |

Package Dimension



Matching Configuration



50Ω Single-ended

L1=39nH, L2=39nH, C1=39pF, C2=300pF

Source / Load Impedance = 50Ω

Ambient Temperature = 25°C

Rev 0. 130507

