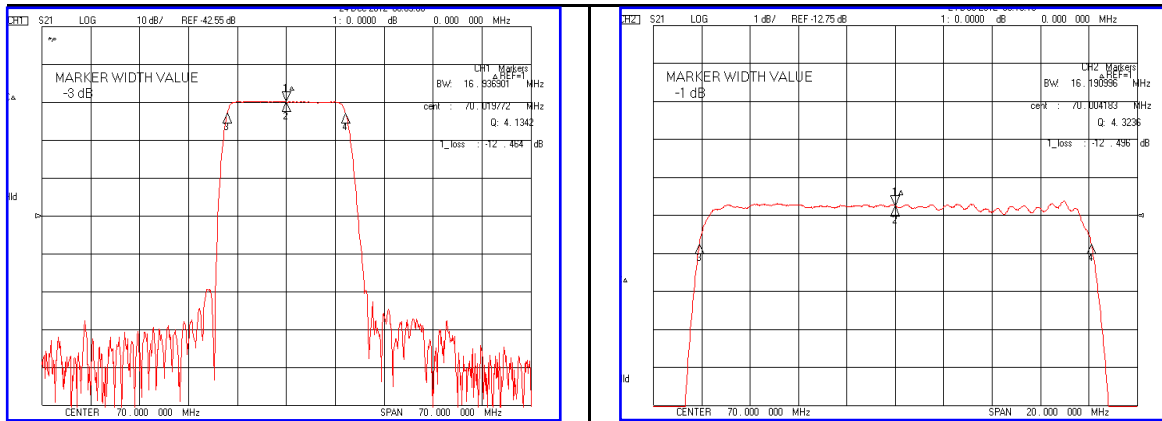


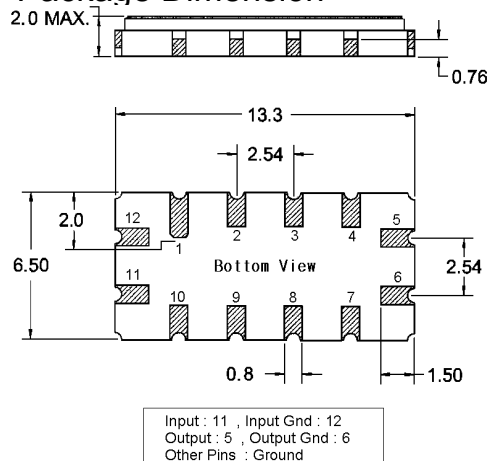
Typical Performance



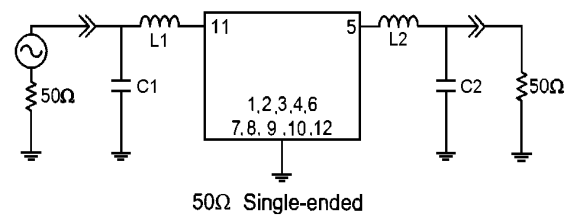
Specification

| Parameter | Unit | Min. | Typ. | Max. |
|---|-------------------------|-----------------------|-------|-------|
| Center Frequency | MHz | - | 70.00 | - |
| Insertion Loss | dB | - | 12.50 | 15.00 |
| 1dB Bandwidth | MHz | 16.00 | 16.19 | - |
| 40dB Bandwidth | MHz | - | 20.80 | 21.50 |
| Passband Ripple($F_c \pm 7.25\text{MHz}$) | dB | - | 0.45 | 1.00 |
| Group Delay Variation($F_c \pm 7.25\text{MHz}$) | nsec | - | 50 | 100 |
| Absolute Delay | μsec | - | 0.92 | - |
| Attenuation $F_c \pm 12\text{MHz}$ Point | dB | - | 55 | - |
| Substrate Material | - | Yz-LiNbO ₃ | | |
| Temperature Coefficient | ppm/ $^{\circ}\text{C}$ | -86 | | |

Package Dimension



Matching Configuration



L1=150nH, L2=180nH, C1=47pF, C2=30pF
Source / Load Impedance = 50 Ω
Ambient Temperature = 25 $^{\circ}\text{C}$

Rev0. 121227

