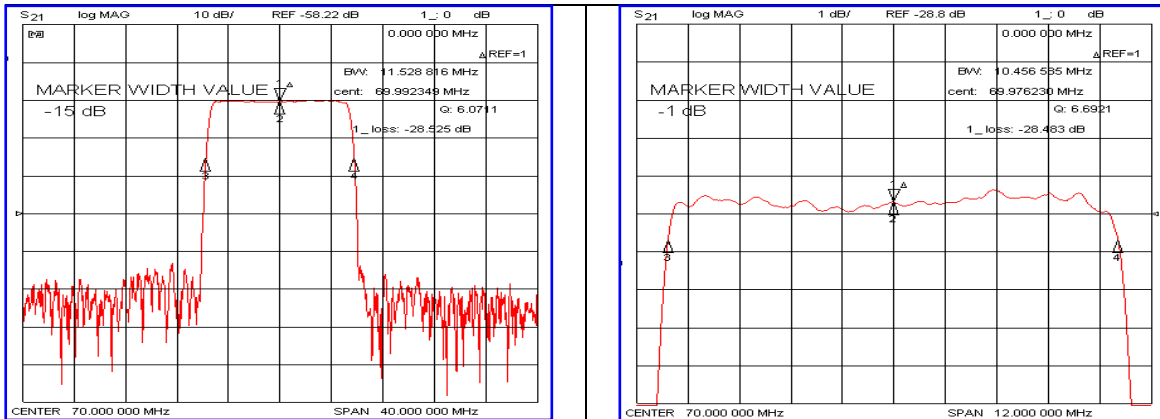


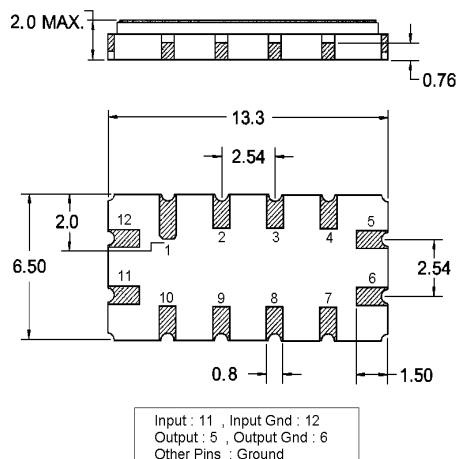
### Typical Performance



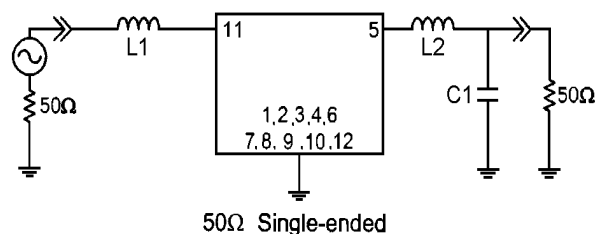
### Specification

| Parameter                      | Unit   | Min.                   | Typ.  | Max.  |
|--------------------------------|--------|------------------------|-------|-------|
| Center Frequency               | MHz    | -                      | 70.00 | -     |
| Insertion Loss                 | dB     | -                      | 28.60 | 30.50 |
| 1dB Bandwidth                  | MHz    | 10.30                  | 10.45 | -     |
| 15dB Bandwidth                 | MHz    | -                      | 11.55 | 11.90 |
| 25dB Bandwidth                 | MHz    | -                      | 11.83 | -     |
| Passband Ripple(Fc±5MHz)       | dB     | -                      | 0.65  | 1.20  |
| Group Delay Variation(Fc±5MHz) | nsec   | -                      | 50    | 100   |
| Absolute Delay                 | µsec   | -                      | 1.60  | -     |
| Ultimate Attenuation           | dB     | 40                     | 43    | -     |
| Substrate Material             | -      | 112-LiTaO <sub>3</sub> |       |       |
| Temperature Coefficient        | ppm/°C | -20                    |       |       |

### Package Dimension



### Matching Configuration



L1=180nH, L2=120nH, C1=24pF  
Source / Load Impedance = 50Ω  
Ambient Temperature = 25°C

Rev.0 100611

